



**record**





# ABOUT US:

Welcome to Record India, part of ASSA ABLOY group, is a leading provider of state-of-the-art automatic pedestrian doors. With years of expertise and experience in the industry, we are dedicated to offering a comprehensive range of high-quality automatic sliding and swing doors, combining ease-of-use, accessibility, and cutting-edge technology for a seamless and secure experience.

At Record India, we understand the importance of creating a safe and convenient environment for both commercial and residential spaces. We pride ourselves on incorporating the most advanced technologies into our products, ensuring top-notch performance and durability. From advanced sensors and controls to the latest security features, our automatic doors are built to cater to the diverse requirements of our clientele.

As a customer-centric company, we prioritize your satisfaction by offering tailored solutions that meet your unique specifications. Beyond our exceptional products, we are committed to delivering outstanding customer service. We provide comprehensive support throughout the entire process, from product selection to installation and maintenance. Our dedicated team is here to assist you at every step, ensuring that your experience with Record India is seamless and hassle-free.

We invite you to discover the full range of our automatic pedestrian doors. Contact us today to experience the ultimate combination of quality, technology, and convenience. Trust Record India to enhance the accessibility and elegance of your space with our cutting-edge automatic sliding and swing doors.

Physiotherapie



DFA 127

## record DFA 127

# The universal drive system for swing doors

The record DFA 127 is a universal drive system for the automation of swing doors. It is characterized by sophisticated technology, compact design and especially record's legendary smoothness of operation. The focus on a broad range of applications makes it a full-fledged drive, suitable for widely differing requirements.



## Universally applicable

Its universal qualities are mainly due to its electro-mechanical construction, and partly due to its modular design. When the door drive motor operates, it simultaneously tensions a spring integrated in the drive housing. The shutting movement uses energy stored in the spring, which, depending on requirements, is also motorassisted. Even without motor assistance, thanks to ingenious mechanics, optimum power deployment is achieved in the entire door swing area. This is necessary to move the door reliably to its end position against draft resistance, for example, and also complies with the norms and standards of current safety requirements.

The record DFA 127 is available to operate doors in sizes EN4 to EN6. The different spring forces required can be quickly and precisely adjusted on the spot using the special adjustment screw.

In detail, this model also provides many other sophisticated features, allowing pre-defined door types to be quickly and easily adapted to local and country specific circumstances.

## Features:

- DIN 18650-compliant technology, approved worldwide

## Variations:

- Double swing doors with master / slave operation
- Power saving mode: adjustable opening of one or both door panels (stretcher opening)
- Integrated sequential closing control for double-leaf
- Interlock function for two single doors installed consecutively
- Opening or closing in manual mode



Crew



DFA127

## record DFA 127 Gentle Drive System

### LOW ENERGY



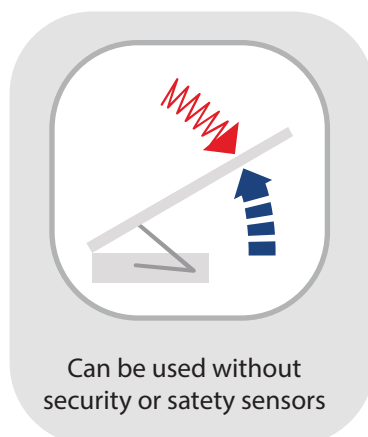
#### The GENTLE one with reduced motion energy

##### Key benefits:

- Depending on location, little or no additional sensors required
- Lowers the inhibition threshold, even in elderly people
- Its gentle operation is convenient and inspires confidence

##### Recommended use:

- Suitable for environments with people of limited or slow reactions



- Technically unified, coherent approach
- Proven peripherals, developed and produced in-house
- Remarkably smooth in operation
- Easy to maintain and reliable
- Drive housing available in stainless steel  
Surface treatments available in a variety of designs and finishes





## record DFA 127

### The right choice every time



#### Especially suitable for use in:

- Retail outlets
- Airports
- Administration and office buildings
- Restaurants and hotels

## record DFA 127

### LOW ENERGY

**The record DFA 127 LOW ENERGY** is the ideal drive for environments where people move only slowly and have limited reaction capacity, such as hospitals and nursing homes. Kinetic energy is limited to 1.6 joules, which means the safety of people in the swing area, even in the absence of additional security sensors, is not compromised.

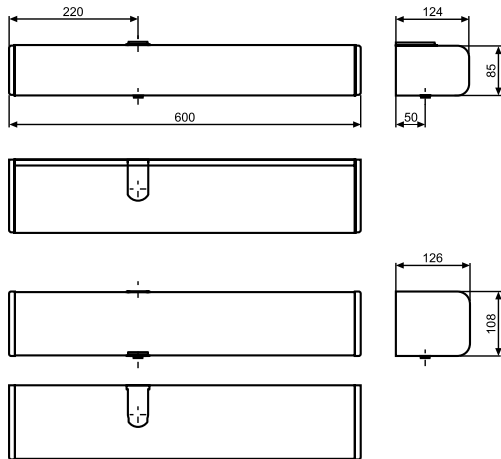
#### Special benefits:

- Thanks to its smooth, even movement, it lowers the inhibition threshold of slow-reacting people
- Additional security sensors can be dispensed with
- Practically silent operation preserves the peace and quiet of living areas

#### Especially suitable for use in:

- Homes for the elderly and disabled
- Hospitals, clinics and retirement homes
- Private homes and apartments

# record DFA 127 Technical specifications



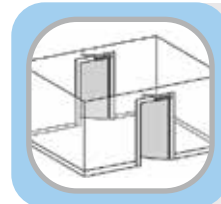
**Lintel installation**  
(1-leaf door)  
Standard bars, DIN left or right, pushing;  
drive variant for pushing sliding bars  
available



**Lintel installation**  
(1-leaf door)  
Slide arm DIN left or right pulling



**Lintel installation**  
(2-leaf door, master / slave operation)  
Two electrically coupled drives with  
standard arm pushing or slide arm  
pulling



**Interlock operation**  
(2 x 1-leaf doors standing one after  
the other)  
Two electrically interconnected drives  
in all arm variants

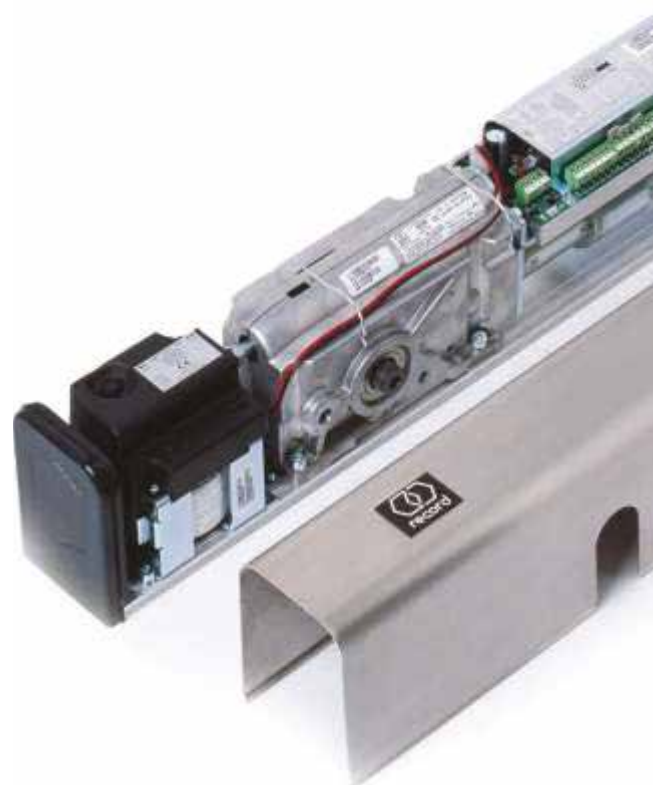
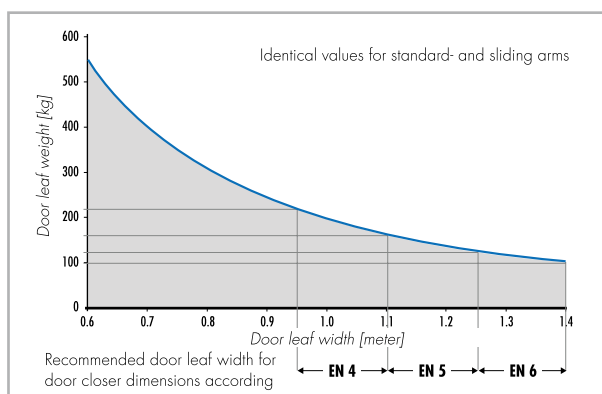
Dimensions of the operator (H x W x L)	85 x 124 x 600 mm
Door closer size	EN4 – EN6 for standard arm and slide arm
Opening time / closing time	3 – 20s / 5 – 20s
Opening angle	70 – 115° (INVERSE up to 95°)
Electrical power supply	230 VAC, 50 / 60 Hz
Rated power	67 W
Consumption in standby mode	13 W
<b>Operating modes with internal BDI operating switch</b>	
	Automatic operation
	Continuously open
	Manual operation

### Operating modes with BDE-D control panel with display (optional)

In addition to the standard modes	
	Locked
	One-way traffic
	Operation lock

<b>Functions</b>	
	Automatic reverse
	Emergency stop, interlock control or 2-leaf doors
	Customer-specific door parameters

<b>Options</b>	
	Electro-magnetic brake
	Integrated mechanical sequential control SFR 127
	Special control option: «barrier-free WC access»
	Hold-open system for fire and smoke protection doors

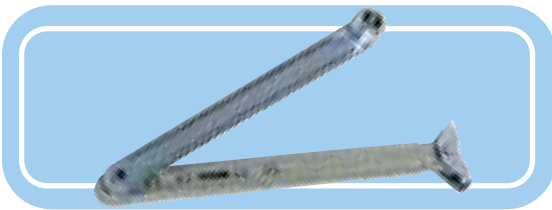


## Accessories and options

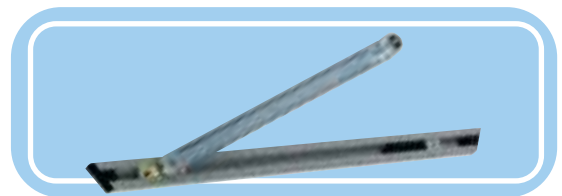
### Arm types

The power transmission from the drive to the door works by means of a bar, which, depending on the mounting situation is available as a standard or sliding arm. Standard arms are available in different lengths to compensate for a range of lintel sizes.

Through the use of optional axle extension pieces, so-called spacer bushes, different lintel heights can be compensated for.

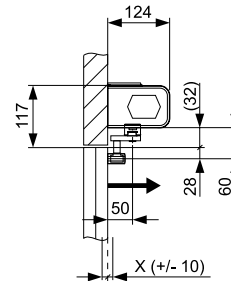
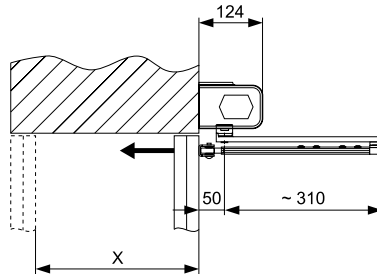


Standard arms, pushing



Sliding arms, pulling or pushing

### Lintel depths



Type	Standard arm SG1 – SG3	Slide arm GG
Lintel depths	X = 0 – 330mm	X = 0 + / – 10mm

### Axis extensions

For standard or slide arm



Standard arm pushing



Slide arm pulling

Type  
20 – 80

42.5 – 102.5mm

32.0 – 92.0mm

### Sensor systems

record RAD 290 radar motion detector  
Infrared presence detector



# record STA 300

record system technologies for light to medium-heavy applications



STA 300

# record STA 300



Record STA 300 sliding door offers an attractive automatic entrance for you with quick installation, convenient for anyone to customize as per their space requirement and you are good to go. It is an ideal choice when choosing one of our automatic door products.

### Never compromise:

The Record STA 300 is a high-quality sliding door tailored to meet customized solutions as per space requirements. Quick and easy installation makes it a preferred choice for smooth operations.

### Proven quality:

Having decades of experience across the globe, Record is an industry leader in the development, production and service of automatic doors. Headquartered in Switzerland, our highquality products have obtained global certifications and are in compliance with European norms.

### Easy to install:

The screwless clamp system makes it super easy to install. There is no need to make holes in glass. The slim profile door system and light weight makes it more attractive.

### Activation options & safety features:

There are multiple choices for activation of door depending upon your requirement and space situation. A combination of CE certified overhead sensors along with various other activation and safety sensors will ensure smooth traffic flow and traffic safety. STA 300 reverses the door if any obstruction is detected during opening, the doors stop immediately and close after a time delay.

## Technical specifications:

General Specifications	Single Leaf	Double Leaf
Opening Width (mm)	900-2000	1100-2000
Max height of passage(mm)	3000	3000
Max door leaf weight (kg)	1x120kg	2x100kg
Operator dimensions(mm)	143x120	143x120
Power supply voltage	100-240V, AC, 50/60Hz	100-240V, AC, 50/60Hz
Output power	200 W	200 W
Ambient temperature	-20 to +50 deg C	-20 to +50 deg C
Recommended application	For tight spaces	For functional entrance with large entrance width



**Door applications**

Standard sliding doors with 1 or 2 leaves

**Record STA 300**



**Optional equipment**

Rechargeable battery for emergency opening or emergency operation



**Peripheral devices**

Record 6-way selector switch with key



Record sensor systems



**Operational Modes**

Fully close/One way/Automatic/Partial open/Full open/Reset

**Programmable functions**

Customer specific door parameter Emergency opening/closing  
Motor control lock Partial opening percentage (Energy saving)  
Opening/Closing speed

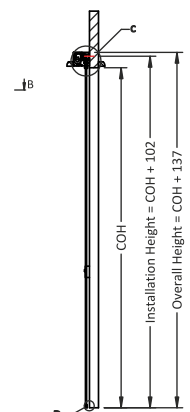
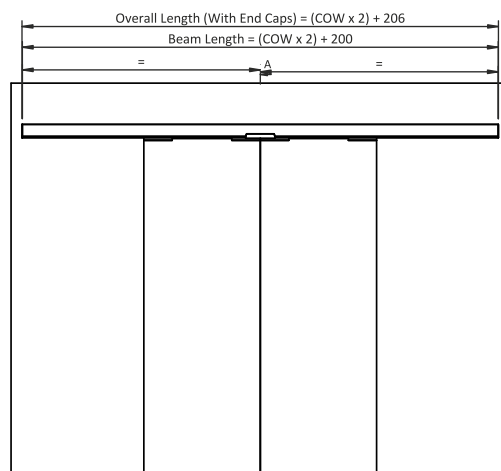
**Sensors for security & safety**

Motion detector RAD 290

**Optional sensors for additional safety & security**

Fail safe/Fail secure lock  
Side safety while opening SP56-M  
Escape route door function with battery

**GA drawing-  
STA 300**



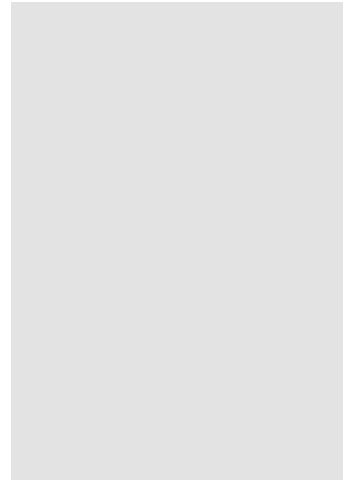
# record STA 21

record system 21 technologies for light to medium-heavy applications



## record STA 21 remarkably inconspicuous

We designed the record STA 21 to meet the requirements of light and medium-heavy sliding door applications. Available in standard single and double leaf sliding models.



### Tasteful Design

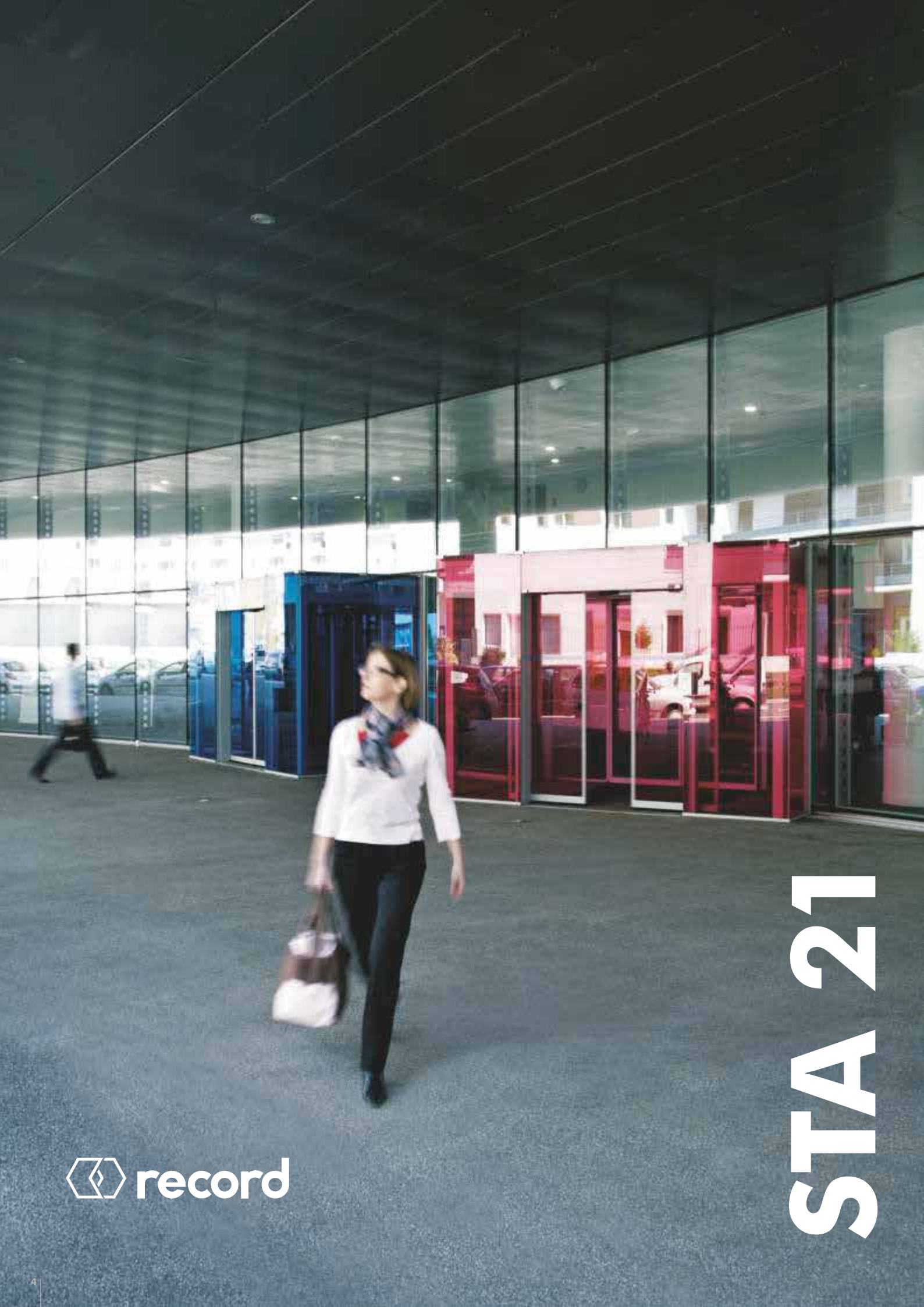
All applications share the same profile system, which features clean, elegant lines, and an attractive overall design. These many design options allow our door systems to be integrated equally harmoniously in a building, or become a style feature.

### Approved for the highest levels of safety and security

The record STA 21 product line fulfils all relevant European and national norms and standards, including DIN 18650, EN 16005 and EN ISO 13849.







 **record**

# STA 21

## Designed for light to medium-heavy door applications

The record STA 21 has been modified to meet the requirements of light to medium-heavy door applications. Both have the same system, enabling the interactive exchange of information between control, sensors and electronic remote control unit.

### The most important functions

The 32-bit microprocessor control enables a wide variety of operational modes and functions. The mode of operation is selected intuitively using the BDE-D electronic remote control; the display features text in the language of your choice. The convenient and user-friendly BDE-D remote control can also be used to set or modify application-specific door parameters such as opening and closing speeds, opening widths for reduced opening, duration of open times, etc. Alternatively, parameter setting can also be done mechanically using the robust, key operated switch.



### Safety and security equipment

The record STA 21 can be fitted with motorized bolt locking. Fitting security floor rails with extended blades can further enhance burglar protection levels.

One optional available is manual unlocking in or outside buildings to guarantee the opening of the automatic door during power failures.

Another is a rechargeable battery equipped with charging status monitoring to open or close the door in emergencies.





 record

STA 21



General Specifications	Single Leaf	Double Leaf
Opening Width (mm)	800-2000	800-2500
Max height of passage(mm)	2500	2500
Max door leaf weight (kg)	1x120kg	2x75kg
Operator dimensions(mm)	158x120	158x120
Power supply voltage	230 VAC, 50/60Hz	230 VAC, 50/60Hz
Power consumption	85 W	85 W
Ambient temperature	-15 to +50 deg C	-15 to +50 deg C
Recommended application	For tight spaces	For functional entrance with large entrance width

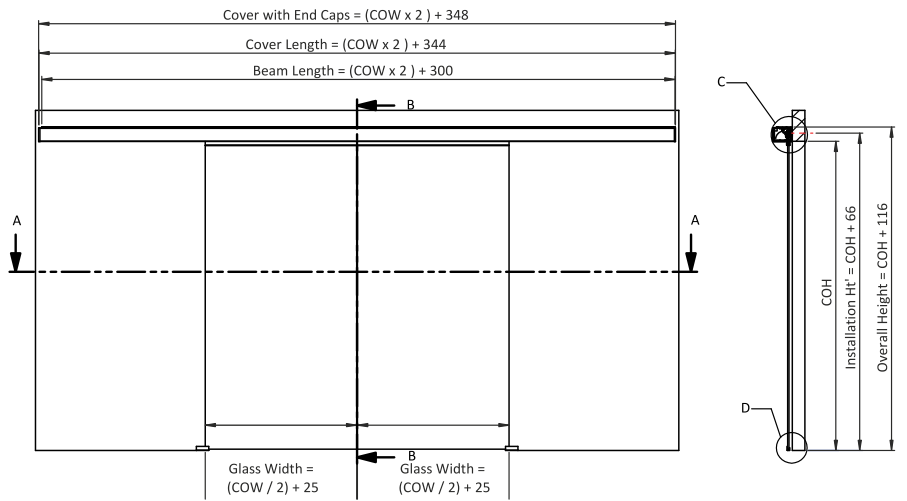
Door applications	Record STA 21
Standard sliding doors with 1 or 2 leaves	●
Optional equipment	
Rechargeable battery for emergency opening or emergency operation	●
Peripheral devices	
Record BDE-D remote control device with text display	●
Record sensor systems	●
Record diagnostic maintenance tool	●



<b>Operational Modes</b>	Automatic operation/ One way traffic/ Continuous open/ Locked/Manual operation
<b>Programmable functions</b>	Customer specific door parameter Emergency opening/closing (programmable parameter) Motor control lock Bell contact Energy saving function (automatic entrance widening TOWA)
<b>Sensors for security &amp; safety</b>	Motion detector RAD 290 Motion & presence detector RIC 290
<b>Optional sensors for additional safety &amp; security</b>	Bolt locking device VRR 20
<b>Optional additional equipment</b>	Optical locking display Emergency open button Manual unlocking inside & outside of door Battery for emergency operation during power failure



# GA drawing- STA 21



## record peripheral devices: sensors and remote control units

A decisive contribution to the success of our products is the fact that we are one of the few manufacturers of automatic doors that develops and makes both the hardware and software found in our control and sensor devices. This enables us to implement the improvements made by our developers and engineers in the most effective way possible by allowing the coordination of individual improvements on an on-going basis.

### Developed and manufactured entirely in-house

When analyzing its immediate environment, the record RAD 290 motion detector permanently communicates with the control device. The detection field is defined electronically, allowing it to eliminate previously acquired door movements. Time-consuming mechanical fine adjustment of the sensor is thereby eliminated.

Also, changes to the field Specifications due to temperature differentials are largely uncritical.

The record RIC 290 sensor device uses both radar and infrared technologies. It is equipped with both motion and presence detectors that trigger opening and closing operations with a high level of security. The device actively communicates with the door control, and recognizes persons in the passage area. Several light curtains also prevent collisions with the door leaves. The record AIR 290 is a pure active infrared motion and presence detector, ideally suited to delineated detection fields such as are found in lobbies and security interlocks.

### Remote control unit with text display

The electronic remote control device BDE-D is equipped with an illuminated display and features user-friendly, highly convenient menu navigation. Several operational modes are available to program basic door functions. These can be individually adjusted to make sure running characteristics meet specific needs. The ease of use is ensured by the clear menu structure, available in subsidiaries in many countries.

#### Sensors



Radar equipped  
motion detector RAD 290



Motion & presence  
detector RIC 290

#### Remote control units



BDE- D  
(60x60mm)



# Services

We have been manufacturing and marketing automatic door systems since 1953. The very first applications were to operate doors in laundries, but automatic door drives rapidly developed into attractive entrance systems with very different functional principles, initially driven by time-saving needs. Later came the prestige element, and today our door systems enhance the architecture of any building, actively contributing to its security and safety, and saving energy by reducing heating and air conditioning costs.

In the course of these developments, our products have become increasingly more refined, their functionality more comprehensive and their operation more convenient and user-friendly. At the same time, the legal requirements have become more demanding in order to enhance operational safety.

## **The right service package for your needs**

For your automatic door to function smoothly over decades and be able to fulfil the relevant safety and security regulations, periodic servicing and maintenance is unavoidable. Benefit from the flexibility of a record maintenance contract, which will allow you to vastly reduce your operational and maintenance costs.

## **Your nearest record partner**

Inspection and maintenance have a particularly high priority at record. The fact that record products are designed and built to last a long time also means they face changing legal requirements. To avoid unpleasant situations for our customers, we make it our priority to personalise our service and maintenance packages, enabling you to fully meet your legal requirements of due diligence.

In consultation with you, our advisor will find the ideal maintenance and service package to meet all your needs.

To know more, please get in touch with your record partner!

---

8-A, Udyog Vihar, Part | & II, Greater Noida (U .F.)-201306

T: +91-120-4751000

e-mail: [info@recorddoors.in](mailto:info@recorddoors.in)/[sales@recorddoors.in](mailto:sales@recorddoors.in)

Website: [www.recorddoors.in](http://www.recorddoors.in)



MIAMI



Follow us:



Please enter "Record group" in the page's search field

Part of ASSA ABLOY Group