

# record DFA 127

automatic drive system for swing doors



DFA 127



### About us:

Welcome to Record India, the leading provider of state-of-the-art automatic pedestrian doors. With years of expertise and experience in the industry, we are dedicated to offering a comprehensive range of high-quality automatic sliding and swing doors, combining ease-of-use, accessibility, and cutting-edge technology for a seamless and secure experience.

At Record India, we understand the importance of creating a safe and convenient environment for both commercial and residential spaces. Our automatic sliding doors provide the perfect solution for effortless entrance and exit, offering a smooth and efficient operation for all users. Whether you require a single or biparting sliding door, our innovative designs adapt to various building structures, ensuring an optimal fit for your specific needs.

With our automatic swing doors, we bring elegance and functionality together. These doors are designed to provide a touch of sophistication while maintaining the highest standards of safety and reliability. Our swing doors offer silent and effortless operation, making them ideal for entrances that require a touch of aesthetic appeal.

We pride ourselves on incorporating the most advanced technologies into our products, ensuring top-notch performance and durability. From advanced sensors and controls to the latest security features, our automatic doors are built to cater to the diverse requirements of our clientele.

As a customer-centric company, we prioritize your satisfaction by offering tailored solutions that meet your unique specifications. Our team of skilled professionals will collaborate with you to understand your specific needs and provide customized doors that are aligned with your requirements.

Beyond our exceptional products, we are committed to delivering outstanding customer service. We provide comprehensive support throughout the entire process, from product selection to installation and maintenance. Our dedicated team is here to assist you at every step, ensuring that your experience with Record India is seamless and hassle-free.

We invite you to discover the full range of our automatic pedestrian doors. Contact us today to experience the ultimate combination of quality, technology, and convenience. Trust Record India to enhance the accessibility and elegance of your space with our cutting-edge automatic sliding and swing doors.



## record DFA 127 – the universal drive system for swing doors

The record DFA 127 is a universal drive system for the automation of swing doors. It is characterized by sophisticated technology, compact design and especially record's legendary smoothness of operation. The focus on a broad range of applications makes it a full-fledged drive, suitable for widely differing requirements.

### Universally applicable

Its universal qualities are mainly due to its electro-mechanical construction, and partly due to its modular design. When the door drive motor operates, it simultaneously tensions a spring integrated in the drive housing. The shutting movement uses energy stored in the spring, which, depending on requirements, is also motor-assisted. Even without motor assistance, thanks to ingenious mechanics, optimum power deployment is achieved in the entire door swing area. This is necessary to move the door reliably to its end position against draft resistance, for example, and also complies with the norms and standards of current safety requirements.

The record DFA 127 is available to operate doors in sizes EN4 to EN6. The different spring forces required can be quickly and precisely adjusted on the spot using the special adjustment screw.

In detail, this model also provides many other sophisticated features, allowing pre-defined door types to be quickly and easily adapted to local and country-specific circumstances.

### Features:

- DIN 18650-compliant technology, approved worldwide

### Variations:

- Double swing doors with master / slave operation
- Power saving mode: adjustable opening of one or both door panels (stretcher opening)
- Integrated sequential closing control for double-leaf
- Interlock function for two single doors installed consecutively
- Opening or closing in manual mode



Physiotherapie



DFA 127



## record DFA 127 – Gentle Drive System

### LOW ENERGY



The GENTLE one  
with reduced motion energy

#### Key benefits:

- Depending on location, little or no additional sensors required
- Lowers the inhibition threshold, even in elderly people
- Its gentle operation is convenient and inspires confidence

#### Recommended use:

- Suitable for environments with people of limited or slow reactions



Can be used without security  
or safety sensors

- Technically unified, coherent approach
- Proven peripherals, developed and produced in-house
- Remarkably smooth in operation
- Easy to maintain and reliable
- Drive housing available in stainless steel
- Surface treatments available in a variety of designs and finishes



Crew



DEFA127



## record DFA 127 – the right choice every time

Especially suitable for use in:

- Retail outlets
- Airports
- Administration and office buildings
- Restaurants and hotels

### record DFA 127 LOW ENERGY

The record DFA 127 LOW ENERGY is the ideal drive for environments where people move only slowly and have limited reaction capacity, such as hospitals and nursing homes. Kinetic energy is limited to 1.6 joules, which means the safety of people in the swing area, even in the absence of additional security sensors, is not compromised.

Especially suitable for use in:

- Homes for the elderly and disabled
- Hospitals, clinics and retirement homes
- Private homes and apartments

Special benefits:

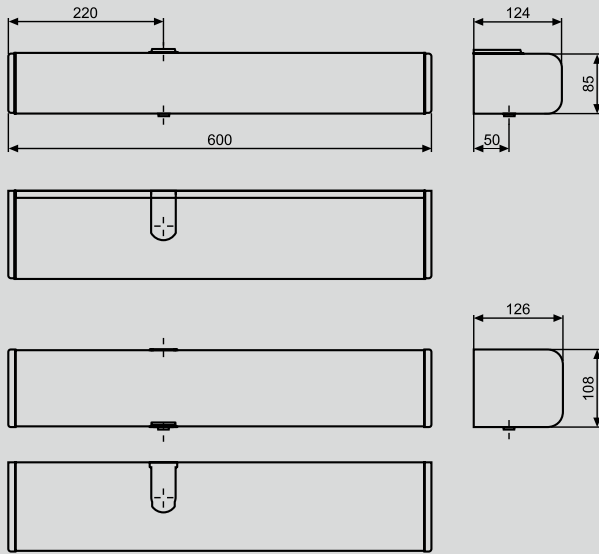
- Thanks to its smooth, even movement, it lowers the inhibition threshold of slow-reacting people
- Additional security sensors can be dispensed with
- Practically silent operation preserves the peace and quiet of living areas







# record DFA 127 – technical specifications



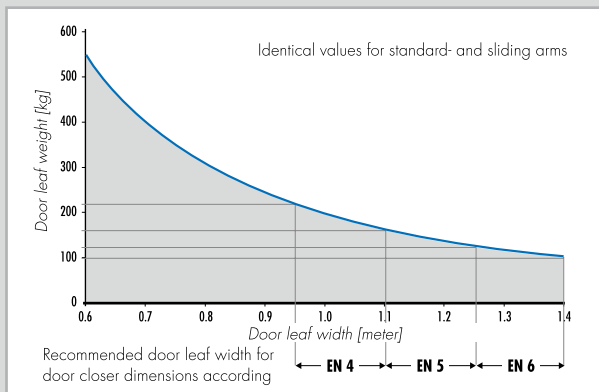
|  |  |
|--|--|
| Dimensions of the operator (H x W x L) | 85 x 124 x 600 mm                        |
| Door closer size                       | EN4 – EN6 for standard arm and slide arm |
| Opening time / closing time            | 3 – 20 s / 5 – 20 s                      |
| Opening angle                          | 70 – 115° (INVERSE up to 95°)            |
| Electrical power supply                | 230 VAC, 50 / 60 Hz                      |
| Rated power                            | 67 W                                     |
| Consumption in standby mode            | 13 W                                     |

|   |                     |
|---|---------------------|
| <b>Operating modes with internal BDI operating switch</b> | Automatic operation |
|   | Continuously open   |
|   | Manual operation    |

|   |                 |
|---|-----------------|
| <b>Operating modes with BDE-D control panel with display (optional)</b> |                 |
| In addition to the standard modes                                       | Locked          |
|   | One-way traffic |
|   | Operation lock  |

|                  |   |
|------------------|---|
| <b>Functions</b> | Automatic reverse                                 |
|                  | Emergency stop, interlock control or 2-leaf doors |
|                  | Customer-specific door parameters                 |

|                |  |
|----------------|--|
| <b>Options</b> | Electro-magnetic brake                               |
|                | Integrated mechanical sequential control SFR 127     |
|                | Special control option: «barrier-free VVC access»    |
|                | Hold-open system for fire and smoke protection doors |



## Installation variants



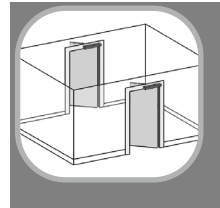
**Lintel installation**  
 (1-leaf door)  
 Standard bars, DIN left or right, pushing;  
 drive variant for pushing sliding bars  
 available



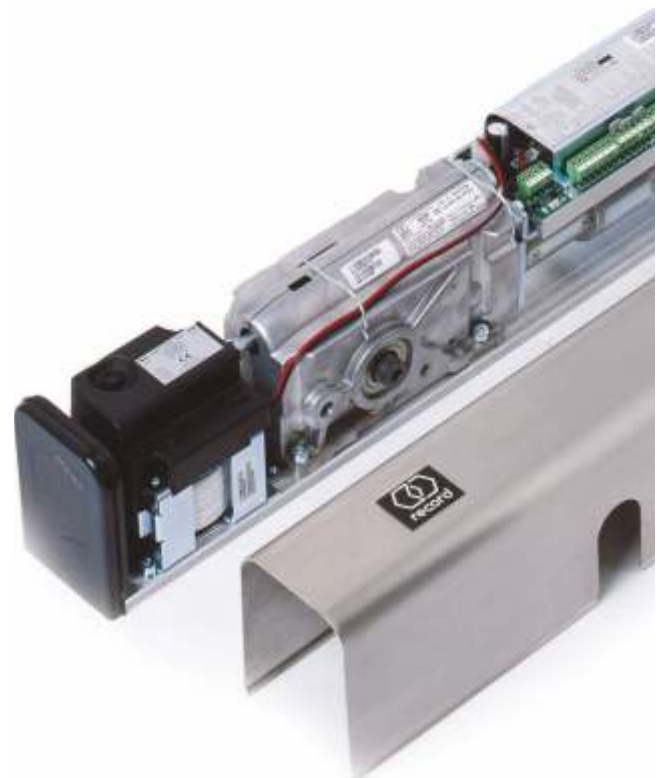
**Lintel installation**  
 (1-leaf door)  
 Slide arm DIN left or right pulling



**Lintel installation**  
 (2-leaf door, master / slave operation)  
 Two electrically coupled drives with  
 standard arm pushing or slide arm  
 pulling



**Interlock operation**  
 (2 x 1-leaf doors standing one after  
 the other)  
 Two electrically interconnected drives  
 in all arm variants



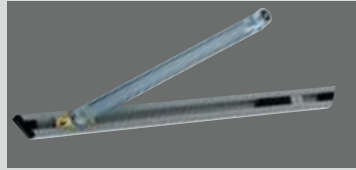
# Accessories and options

## Arm types

- The power transmission from the drive to the door works by means of a bar, which, depending on the mounting situation is available as a standard or sliding arm. Standard arms are available in different lengths to compensate for a range of lintel sizes.
- Through the use of optional axle extension pieces, so-called spacer bushes, different lintel heights can be compensated for.

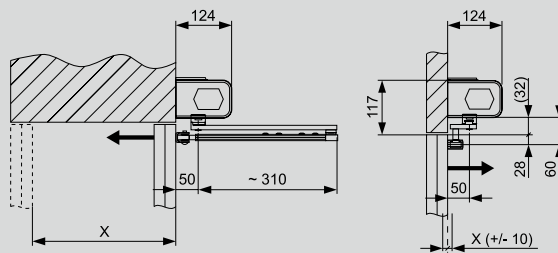


Standard arms, pushing



Sliding arms, pulling or pushing

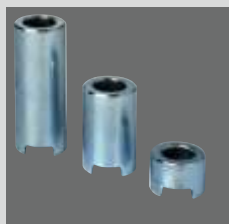
## Lintel depths



|               |                        |                  |
|---------------|------------------------|------------------|
| Type          | Standard arm SG1 – SG3 | Slide arm GG     |
| Lintel depths | X = 0 – 330 mm         | X = 0 + / -10 mm |

## Axis extensions

- For standard or slide arm



|         |                      |                   |
|---------|----------------------|-------------------|
| Type    | Standard arm pushing | Slide arm pulling |
| 20 – 80 | 42.5 – 102.5 mm      | 32.0 – 92.0 mm    |

## Sensor systems

- record RAD 290 radar motion detector
- Infrared presence detector







## Contact

---



**CORPORATE OFFICE:**  
8-A, Udyog Vihar, Part I & II, Greater Noida (U.P.)-201306  
T: +91-120-4751000

**e-mail:**  
Info.in.entrance@assaabloy.com  
Services.in.entrance@assaabloy.com

**Website:** [www.recorddoors.com/in](http://www.recorddoors.com/in)

**Toll Free:** 1800-1020-276

